

PRELIMINARY

Notice: This is not a final specification.
Some parametric limits are subject to change.

MITSUBISHI SEMICONDUCTOR (GaAs FET)

MGFC36V5964A

5.9~6.4GHz BAND 4W INTERNALLY MATCHED GaAs FET

DESCRIPTION

The MGFC36V5964A is an internally impedance-matched GaAs power FET especially designed for use in 5.9~6.4GHz band amplifiers. The hermetically sealed metal-ceramic package guarantees high reliability.

FEATURES

- Class A operation
- Internally matched to 50Ω system
- High output power
P_{1dB} = 4W(TYP) @ 5.9~6.4GHz
- High power gain
GLP = 10dB(TYP) @ 5.9~6.4GHz
- High power added efficiency
η_{add} = 30%(TYP) @ 5.9~6.4GHz
- Hermetically sealed metal-ceramic package
- Low distortion [Item : - 51]
IM₃ = - 45dBc(TYP) @ P_o = 25(dBm) S.C.L.

APPLICATION

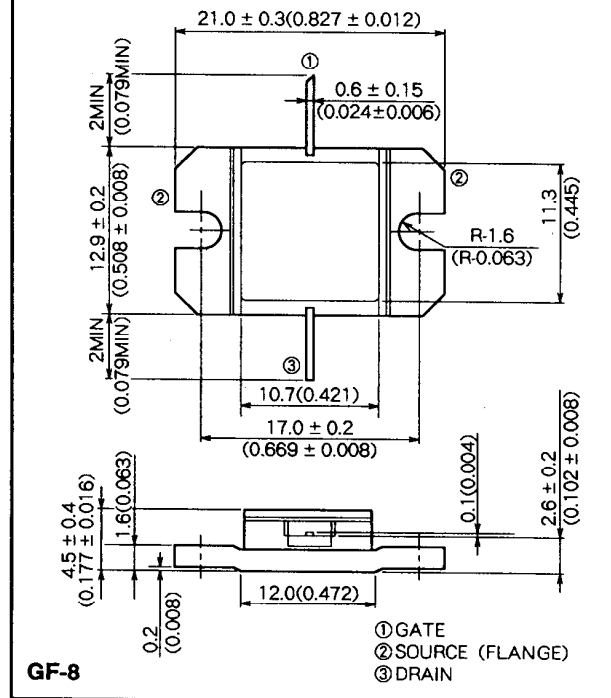
- Item-01 : 5.9~6.4GHz band power amplifier
- Item-51 : Digital radio communication

QUALITY GRADE

- IG

OUTLINE DRAWING

Unit : millimeters (inches)



RECOMMENDED BIAS CONDITIONS

- V_{DS} = 10V
- I_D = 1.2A
- R_G = 100(Ω)
- Refer to Bias Procedure

ABSOLUTE MAXIMUM RATINGS (T_a = 25°C)

Symbol	Parameter	Ratings	Unit
V _{GD0}	Gate to drain voltage	- 15	V
V _{GS0}	Gate to source voltage	- 15	V
I _D	Drain current	3.75	A
I _{GR}	Reverse gate current	- 10	mA
I _{GF}	Forward gate current	21	mA
P _T	Total power dissipation * 1	25	W
T _{ch}	Channel temperature	175	°C
T _{stg}	Storage temperature	- 65 ~ + 175	°C

* 1 : T_c = 25°C

ELECTRICAL CHARACTERISTICS (T_a = 25°C)

Symbol	Parameter	Test conditions	Limits			Unit
			Min	Typ	Max	
I _{oss}	Saturated drain current	V _{DS} = 3V, V _{GS} = 0V	-	-	3.75	A
g _m	Transconductance	V _{DS} = 3V, I _D = 1.1A	-	1	-	S
V _{GS(off)}	Gate to source cut-off voltage	V _{DS} = 3V, I _D = 10mA	-	-	- 4.5	V
P _{1dB}	Output power at 1dB gain compression	V _{DS} = 10V, I _D = 1.2A, f = 5.9~6.4GHz	35	36	-	dBm
GLP	Linear power gain		9	10	-	dB
I _D	Drain current		-	-	1.8	A
η _{add}	Power added efficiency		-	30	-	%
IM ₃	3rd order IM distortion * 1		- 42	- 45	-	dBc
R _{th(ch-c)}	Thermal resistance * 2		ΔV _f method	-	5	6

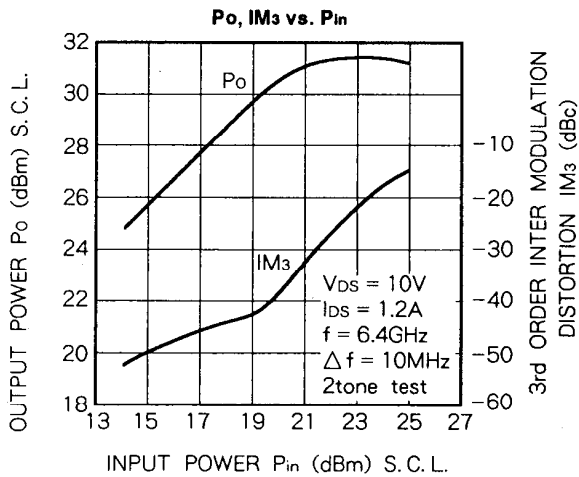
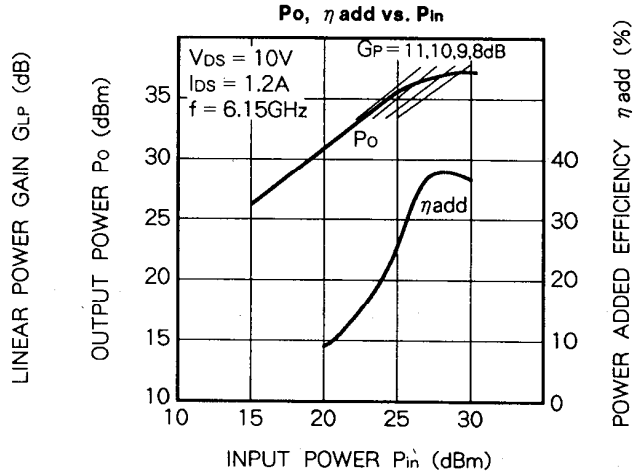
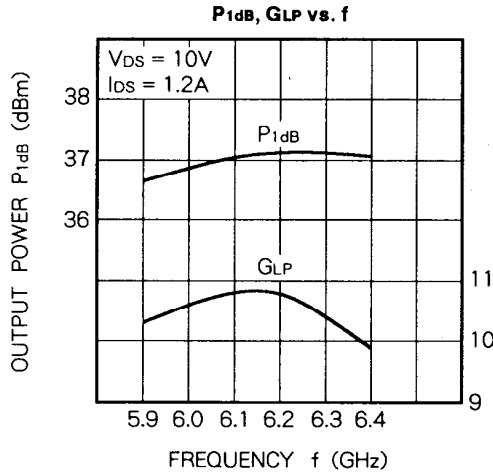
* 1 : Item-51, 2-tone test P_o = 25dBm Single Carrier Level f = 6.4GHz Δf = 10MHz * 2 : Channel to case

NOV. '97

PRELIMINARY
 Notice: This is not a final specification
 Some parametric limits are subject to change.

5.9~6.4GHz BAND 4W INTERNALLY MATCHED GaAs FET

TYPICAL CHARACTERISTICS



S PARAMETERS (T_a = 25°C, V_{DS} = 10V, I_{DS} = 1.2A)

f (GHz)	S parameters							
	S ₁₁		S ₂₁		S ₁₂		S ₂₂	
	Magn.	Angle(deg.)	Magn.	Angle(deg.)	Magn.	Angle(deg.)	Magn.	Angle(deg.)
5.9	0.22	-171	3.29	-27	0.079	-70	0.47	-172
6.0	0.12	145	3.40	-44	0.081	-89	0.41	178
6.1	0.12	60	3.49	-59	0.082	-104	0.34	166
6.2	0.23	20	3.49	-75	0.084	-120	0.27	153
6.3	0.35	-1	3.32	-91	0.081	-135	0.19	139
6.4	0.44	-16	3.08	-106	0.079	-149	0.13	124