

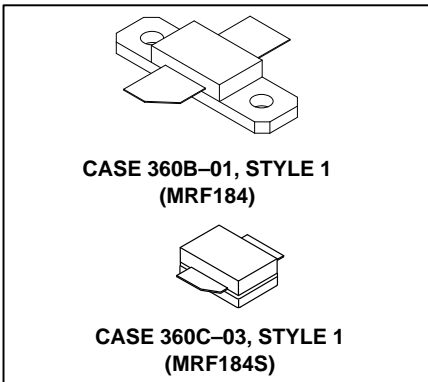
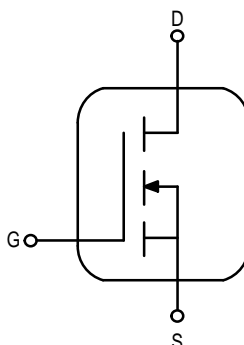
The RF MOSFET Line  
**RF POWER Field-Effect Transistors**  
N-Channel Enhancement-Mode Lateral MOSFETs

**MRF184**  
**MRF184S**

Designed for broadband commercial and industrial applications at frequencies to 1.0 GHz. The high gain and broadband performance of these devices makes them ideal for large-signal, common source amplifier applications in 28 volt base station equipment.

**60 W, 1.0 GHz**  
**LATERAL N-CHANNEL**  
**BROADBAND**  
**RF POWER MOSFETs**

- Guaranteed Performance @ 945 MHz, 28 Volts  
Output Power = 60 Watts  
Power Gain = 11.5 dB  
Efficiency = 53%
- Characterized with Series Equivalent Large-Signal Impedance Parameters
- S-Parameter Characterization at High Bias Levels
- Excellent Thermal Stability
- Capable of Handling 30:1 VSWR @ 28 Vdc, 945 MHz



**MAXIMUM RATINGS**

Rating	Symbol	Value	Unit
Drain-Source Voltage	$V_{DSS}$	65	Vdc
Gate-Source Voltage	$V_{GS}$	$\pm 20$	Vdc
Drain Current — Continuous	$I_D$	7	Adc
Total Device Dissipation @ $T_C = 70^\circ\text{C}$ Derate above $70^\circ\text{C}$	$P_D$	118 0.9	Watts W/ $^\circ\text{C}$
Storage Temperature Range	$T_{stg}$	-65 to +150	$^\circ\text{C}$
Operating Junction Temperature	$T_J$	200	$^\circ\text{C}$

**THERMAL CHARACTERISTICS**

Characteristic	Symbol	Max	Unit
Thermal Resistance, Junction to Case	$R_{\theta JC}$	1.1	$^\circ\text{C/W}$

**ELECTRICAL CHARACTERISTICS** ( $T_C = 25^\circ\text{C}$  unless otherwise noted)

Characteristic	Symbol	Min	Typ	Max	Unit
----------------	--------	-----	-----	-----	------

**OFF CHARACTERISTICS**

Drain-Source Breakdown Voltage ( $V_{GS} = 0\text{ V}$ , $I_D = 1\ \mu\text{A}$ )	$V_{(BR)DSS}$	65	-	-	Vdc
Zero Gate Voltage Drain Current ( $V_{DS} = 28\text{ V}$ , $V_{GS} = 0\text{ V}$ )	$I_{DSS}$	-	-	1	$\mu\text{A}$ dc
Gate-Source Leakage Current ( $V_{GS} = 20\text{ V}$ , $V_{DS} = 0\text{ V}$ )	$I_{GSS}$	-	-	1	$\mu\text{A}$ dc

**NOTE – CAUTION** – MOS devices are susceptible to damage from electrostatic charge. Reasonable precautions in handling and packaging MOS devices should be observed.

**ELECTRICAL CHARACTERISTICS – continued** ( $T_C = 25^\circ\text{C}$  unless otherwise noted)

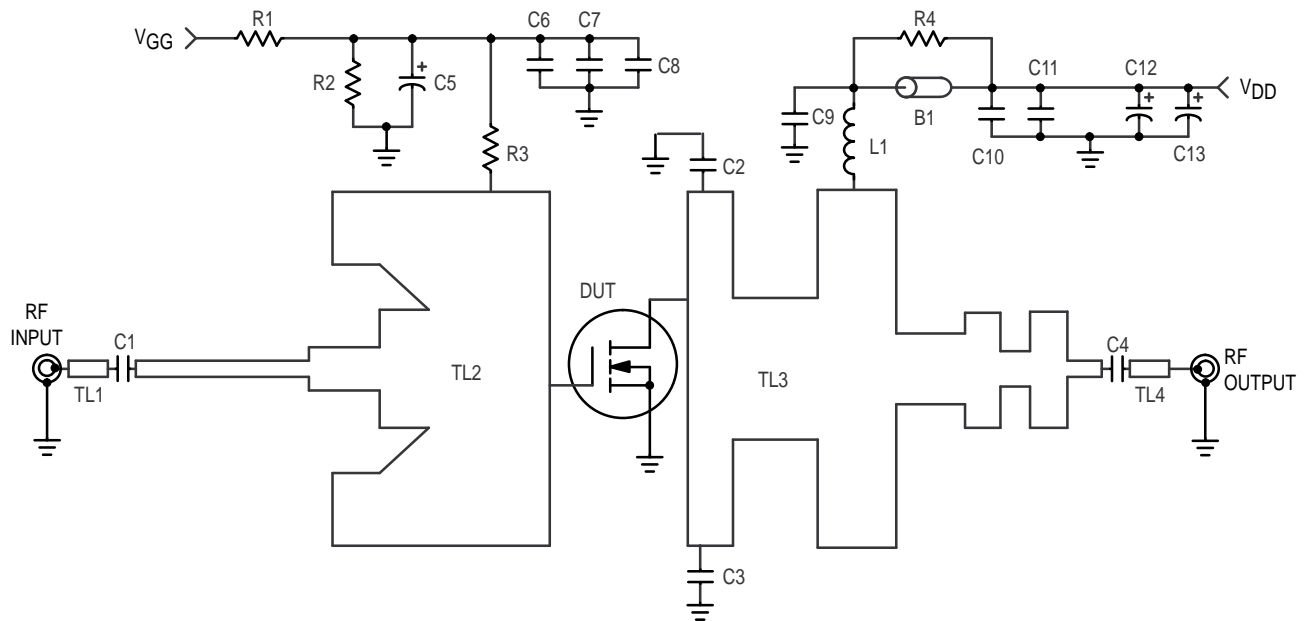
Characteristic	Symbol	Min	Typ	Max	Unit
<b>ON CHARACTERISTICS</b>					
Gate Threshold Voltage ( $V_{DS} = 10\text{ V}$ , $I_D = 200\ \mu\text{A}$ )	$V_{GS(th)}$	2	3	4	Vdc
Gate Quiescent Voltage ( $V_{DS} = 28\text{ V}$ , $I_D = 100\text{ mA}$ )	$V_{GS(Q)}$	3	4	5	Vdc
Drain–Source On–Voltage ( $V_{GS} = 10\text{ V}$ , $I_D = 3\text{ A}$ )	$V_{DS(on)}$	–	0.65	0.8	Vdc
Forward Transconductance ( $V_{DS} = 10\text{ V}$ , $I_D = 3\text{ A}$ )	$g_{fs}$	2.2	2.6	–	s

**DYNAMIC CHARACTERISTICS**

Input Capacitance ( $V_{DS} = 28\text{ V}$ , $V_{GS} = 0\text{ V}$ , $f = 1\text{ MHz}$ )	$C_{iss}$	–	83	–	pF
Output Capacitance ( $V_{DS} = 28\text{ V}$ , $V_{GS} = 0\text{ V}$ , $f = 1\text{ MHz}$ )	$C_{oss}$	–	44	–	pF
Reverse Transfer Capacitance ( $V_{DS} = 28\text{ V}$ , $V_{GS} = 0\text{ V}$ , $f = 1\text{ MHz}$ )	$C_{rss}$	–	4.3	–	pF

**FUNCTIONAL CHARACTERISTICS**

Common Source Power Gain ( $V_{DD} = 28\text{ V}$ , $P_{out} = 60\text{ W}$ , $f = 945\text{ MHz}$ , $I_{DQ} = 100\text{ mA}$ )	$G_{ps}$	11.5	15	–	dB
Drain Efficiency ( $V_{DD} = 28\text{ V}$ , $P_{out} = 60\text{ W}$ , $f = 945\text{ MHz}$ , $I_{DQ} = 100\text{ mA}$ )	$\eta$	53	60	–	%
Load Mismatch ( $V_{DD} = 28\text{ V}$ , $P_{out} = 60\text{ W}$ , $I_{DQ} = 100\text{ mA}$ , $f = 945\text{ MHz}$ , Load VSWR 5:1 at all Phase Angles)	$\psi$	No Degradation in Output Power			

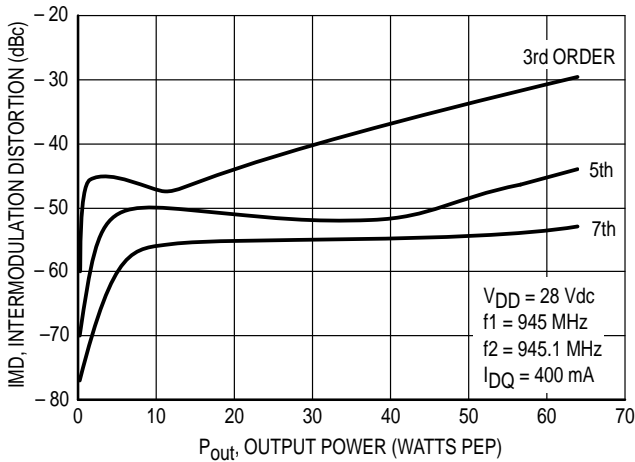


- B1 Short RF Bead Fair Rite–2743019447
- C1 18 pF Chip Capacitor
- C2, C3, C6, C9 43 pF Chip Capacitor
- C4 100 pF Chip Capacitor
- C5, C12 10  $\mu\text{F}$ , 50 Vdc Electrolytic Capacitor
- C7, C10 1000 pF Chip Capacitor
- C8, C11 0.1  $\mu\text{F}$ , 50 Vdc Chip Capacitor
- C13 250  $\mu\text{F}$ , 50 Vdc Electrolytic Capacitor

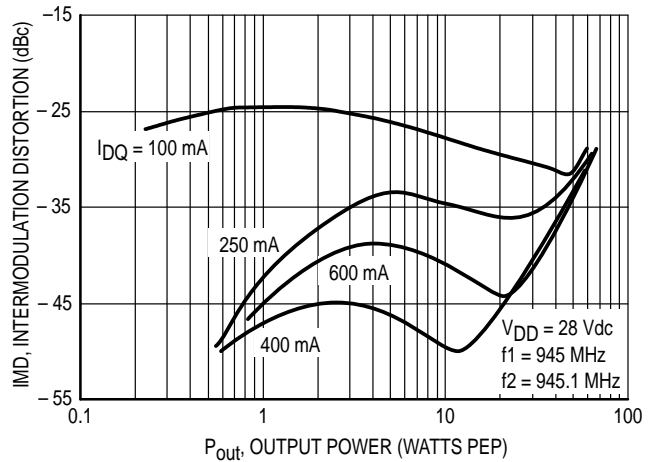
- L1 5 Turns, 20 AWG, IDIA 0.126"
- R1 10 k $\Omega$ , 1/4 W Resistor
- R2 13 k $\Omega$ , 1/4 W Resistor
- R3 1.0 k $\Omega$ , 1/4 W Chip Resistor
- R4 4 x 39  $\Omega$ , 1/8 W Chip Resistor
- TL1–TL4 Microstrip Line See Photomaster
- Ckt Board 1/32" Glass Teflon,  $\epsilon_r = 2.55$
- ARLON–GX–0300–55–22

**Figure 1. MRF184 Test Circuit Schematic**

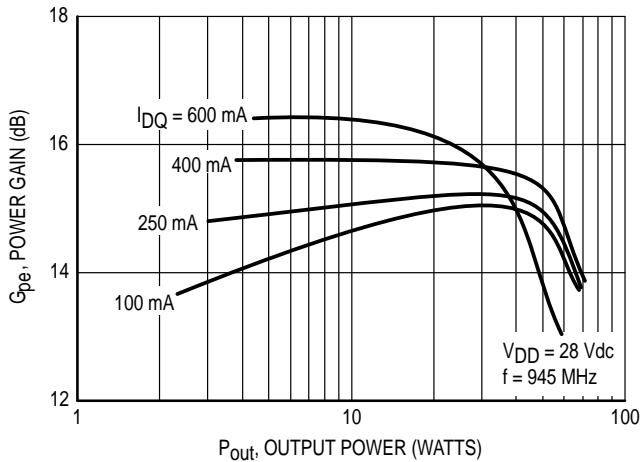
## TYPICAL CHARACTERISTICS



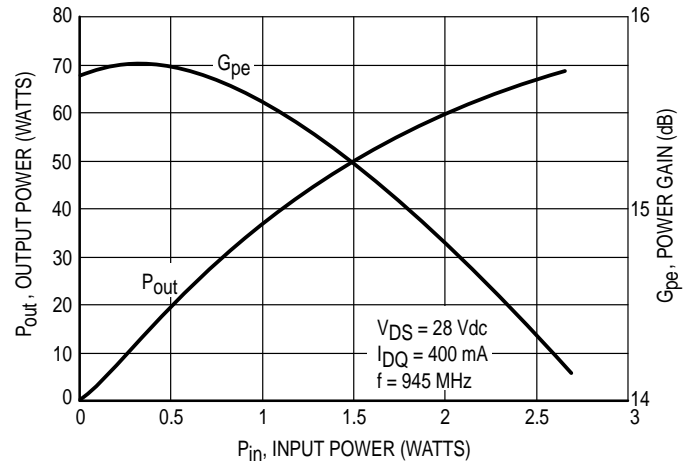
**Figure 2. Intermodulation Distortion versus Output Power**



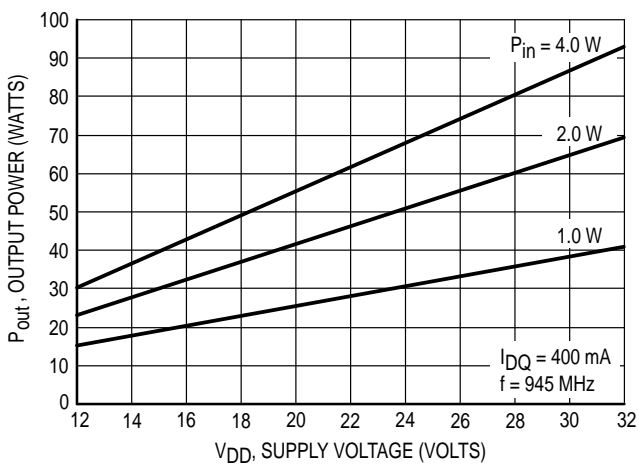
**Figure 3. Intermodulation Distortion versus Output Power**



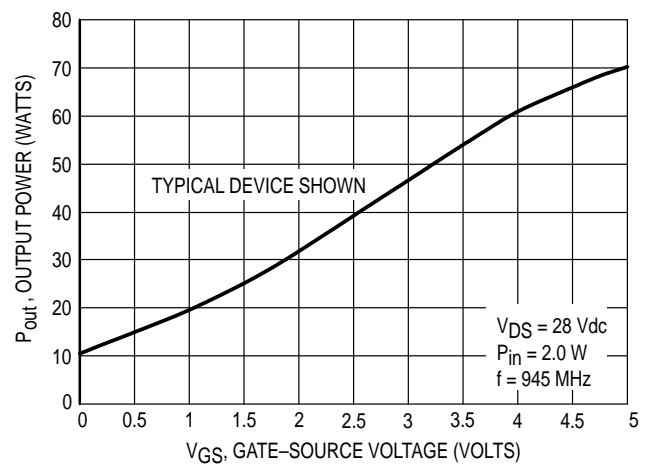
**Figure 4. Power Gain versus Output Power**



**Figure 5. Output Power versus Input Power**



**Figure 6. Output Power versus Supply Voltage**



**Figure 7. Output Power versus Gate Voltage**

## TYPICAL CHARACTERISTICS

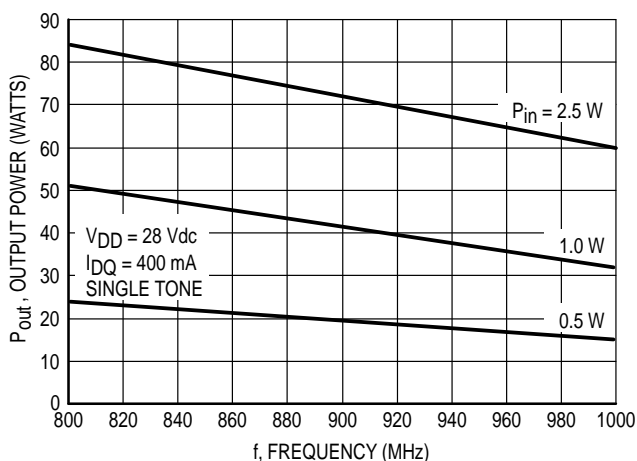


Figure 8. Output Power versus Frequency

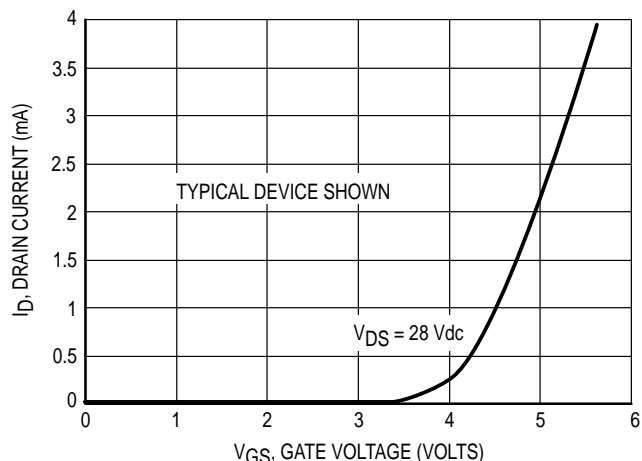


Figure 9. Drain Current versus Gate Voltage

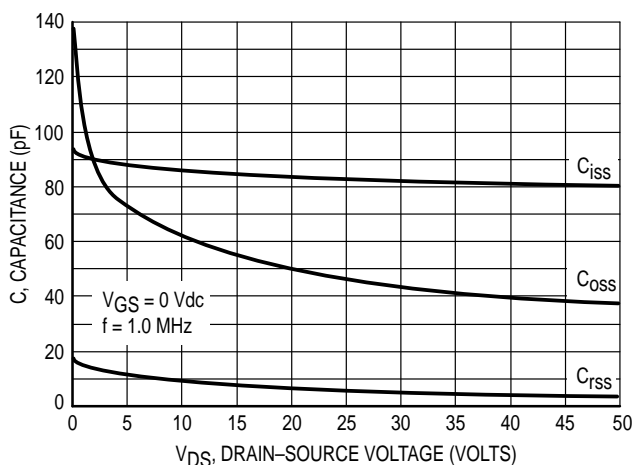


Figure 10. Capacitance versus Voltage

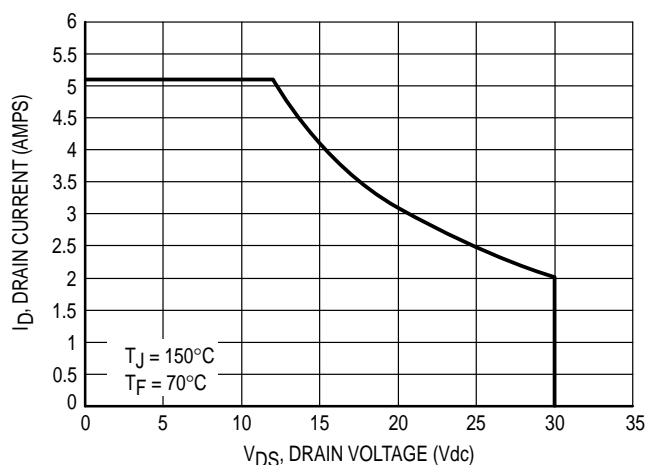


Figure 11. DC Safe Operating Area

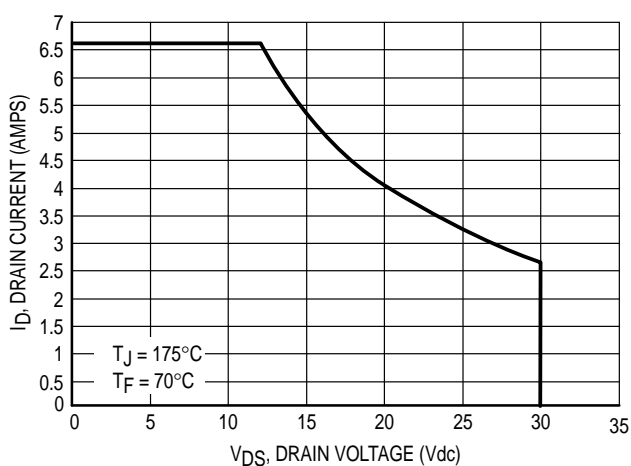


Figure 12. DC Safe Operating Area

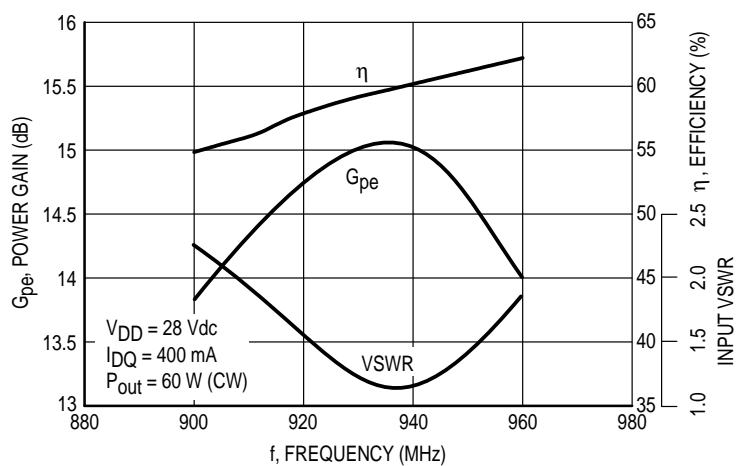


Figure 13. Performance in Broadband Circuit

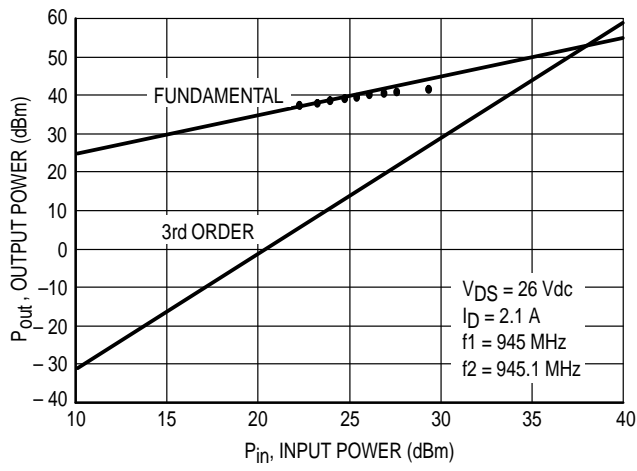


Figure 14. Class A Third Order Intercept Point

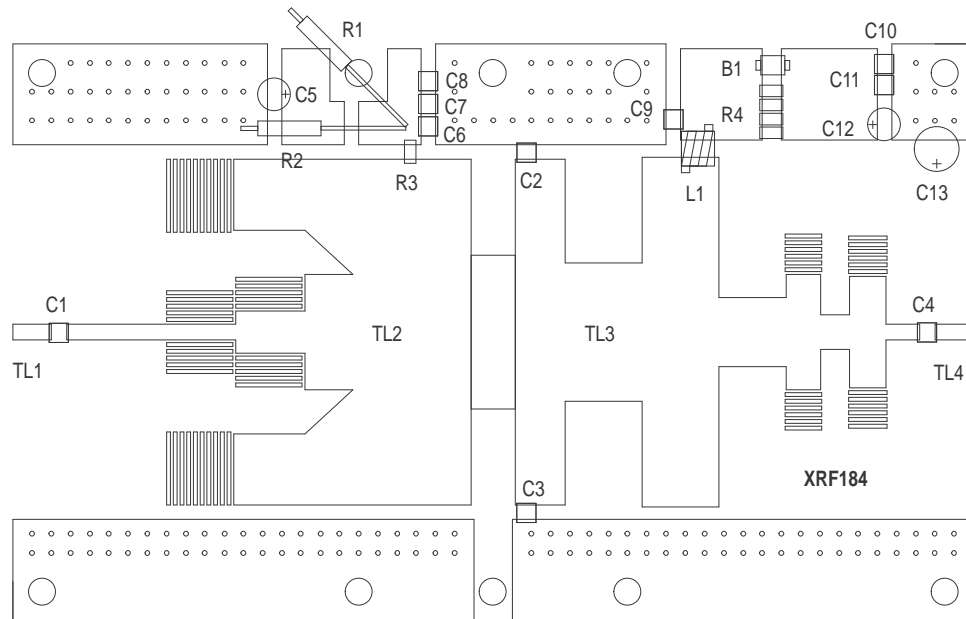
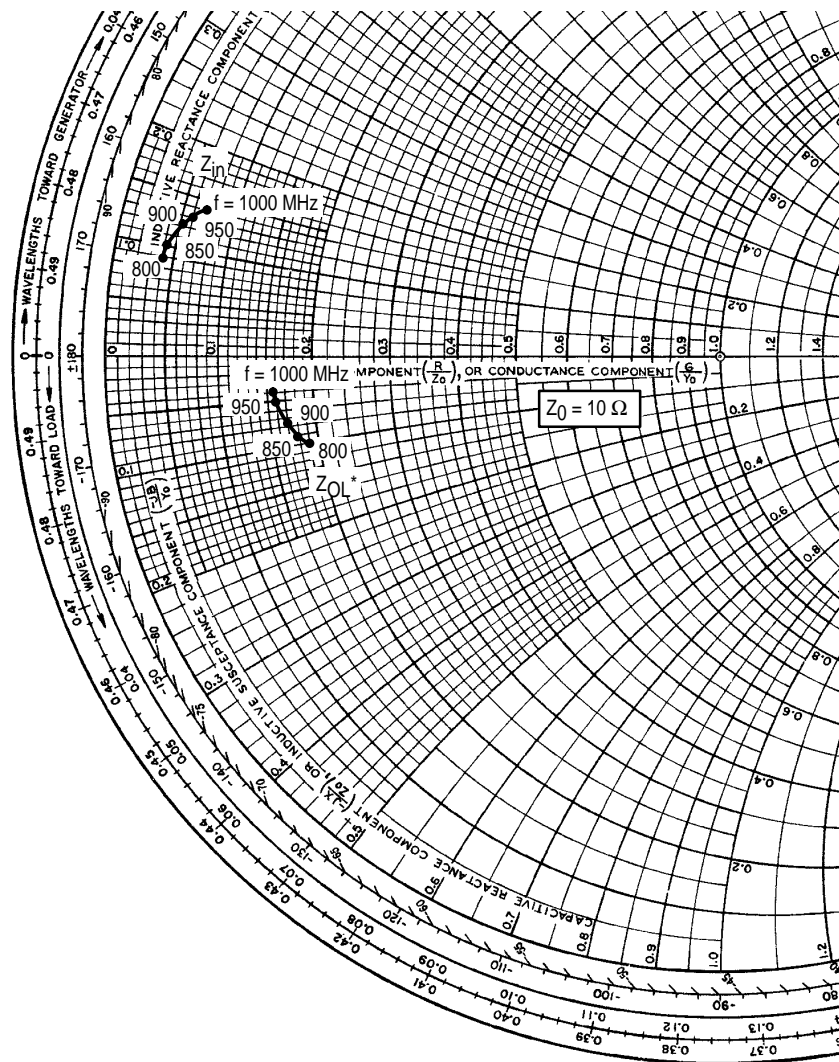


Figure 15. Component Parts Layout



$V_{DD} = 28 \text{ Vdc}$ ,  $I_{DQ} = 100 \text{ mA}$ ,  $P_{out} = 60 \text{ W}$

f MHz	$Z_{in}$ Ohms	$Z_{OL}^*$ Ohms
800	$0.40 + j0.90$	$1.85 - j1.00$
850	$0.45 + j1.10$	$1.75 - j0.90$
900	$0.52 + j1.20$	$1.70 - j0.75$
950	$0.60 + j1.30$	$1.60 - j0.50$
1000	$0.70 + j1.38$	$1.57 - j0.40$

$Z_{in}$  = Conjugate of source impedance.

$Z_{out}$  = Conjugate of the load impedance at given output power, voltage, frequency and efficiency.

Note:  $Z_{OL}^*$  was chosen based on tradeoffs between gain, drain efficiency and device stability.

**Figure 16. Series Equivalent Input and Output Impedance**

Table 1. Common Source S-Parameters ( $V_{DS} = 13.5\text{ V}$ )

$I_D = 2.0\text{ A}$

f MHz	S <sub>11</sub>		S <sub>21</sub>		S <sub>12</sub>		S <sub>22</sub>	
	S <sub>11</sub>	∠φ	S <sub>21</sub>	∠φ	S <sub>12</sub>	∠φ	S <sub>22</sub>	∠φ
20	0.916	179	10.88	80	0.014	-22	0.843	175
30	0.917	178	9.26	79	0.014	-25	0.847	174
40	0.918	177	8.10	78	0.015	-29	0.852	174
50	0.919	176	7.16	77	0.015	-33	0.853	174
100	0.919	175	4.57	75	0.015	-35	0.855	173
150	0.920	174	3.34	67	0.015	-38	0.865	173
200	0.921	173	2.60	62	0.014	-41	0.867	173
250	0.922	173	2.11	59	0.014	-45	0.877	173
300	0.928	172	1.77	55	0.014	-49	0.881	173
350	0.938	172	1.50	50	0.013	-55	0.887	173
400	0.941	171	1.28	47	0.013	-59	0.895	173
450	0.942	171	1.12	44	0.012	-62	0.896	173
500	0.943	171	1.00	41	0.012	-68	0.898	172
550	0.945	171	0.91	38	0.010	-75	0.899	172
600	0.947	171	0.80	35	0.010	-79	0.903	172
650	0.948	171	0.71	33	0.009	-85	0.905	172
700	0.955	170	0.65	30	0.008	-88	0.909	172
750	0.959	170	0.60	28	0.008	-95	0.919	172
800	0.962	169	0.55	25	0.007	-102	0.922	172
850	0.963	169	0.50	23	0.007	-111	0.923	171
900	0.964	169	0.45	21	0.007	-118	0.926	171
950	0.968	169	0.43	19	0.006	-125	0.929	171
1000	0.970	169	0.39	18	0.006	-129	0.933	171
1050	0.971	168	0.36	17	0.005	-134	0.935	171
1100	0.972	168	0.34	14	0.005	-142	0.936	170
1150	0.973	168	0.32	13	0.005	-149	0.938	170
1200	0.974	167	0.29	12	0.006	-156	0.940	169
1250	0.976	167	0.28	10	0.007	-162	0.943	169
1300	0.975	167	0.26	9	0.008	-173	0.945	168
1350	0.972	166	0.25	8	0.009	-178	0.946	167
1400	0.969	166	0.24	7	0.011	175	0.947	167
1450	0.965	165	0.22	6	0.012	172	0.948	167
1500	0.959	164	0.21	5	0.013	169	0.950	167

Table 2. Common Source S-Parameters ( $V_{DS} = 28\text{ V}$ )

$I_D = 2.0\text{ A}$

f MHz	S <sub>11</sub>		S <sub>21</sub>		S <sub>12</sub>		S <sub>22</sub>	
	S <sub>11</sub>	∠φ	S <sub>21</sub>	∠φ	S <sub>12</sub>	∠φ	S <sub>22</sub>	∠φ
20	0.912	-170	16.01	84	0.016	-12	0.746	178
30	0.917	-173	13.73	82	0.015	-15	0.755	177
40	0.918	-174	12.02	80	0.014	-17	0.759	177
50	0.919	-176	10.62	78	0.013	-20	0.766	176
100	0.922	-178	6.76	71	0.012	-22	0.775	176
150	0.930	177	4.92	65	0.011	-25	0.791	176
200	0.931	176	3.82	60	0.010	-27	0.791	176
250	0.933	175	3.07	55	0.009	-29	0.793	176
300	0.941	174	2.53	51	0.009	-31	0.826	176
350	0.943	173	2.14	45	0.008	-35	0.834	176
400	0.945	172	1.83	41	0.008	-45	0.853	176
450	0.948	172	1.58	38	0.007	-52	0.858	176
500	0.950	172	1.39	35	0.007	-57	0.865	176
550	0.955	172	1.24	32	0.007	-61	0.876	176
600	0.960	172	1.10	29	0.006	-64	0.882	176
650	0.965	171	0.96	26	0.006	-68	0.888	175
700	0.967	171	0.89	24	0.006	-71	0.894	175
750	0.970	171	0.80	20	0.005	-73	0.904	175
800	0.973	170	0.73	18	0.005	-78	0.906	175
850	0.974	169	0.66	17	0.004	-83	0.908	174
900	0.975	169	0.61	13	0.004	-91	0.909	173
950	0.976	169	0.57	12	0.004	-94	0.915	173
1000	0.978	168	0.52	11	0.004	-96	0.916	173
1050	0.979	168	0.47	9	0.005	-102	0.919	172
1100	0.980	168	0.43	7	0.005	-115	0.924	172
1150	0.980	167	0.41	6	0.006	-119	0.931	171
1200	0.979	167	0.38	5	0.006	-125	0.934	170
1250	0.978	167	0.36	2	0.006	-139	0.935	170
1300	0.974	167	0.34	1	0.007	-148	0.936	170
1350	0.971	166	0.32	0	0.007	-156	0.937	169
1400	0.970	165	0.31	-1	0.007	-165	0.938	169
1450	0.969	165	0.30	-2	0.008	-171	0.939	169
1500	0.965	164	0.27	-3	0.008	-178	0.946	169



## PACKAGE DIMENSIONS

**CASE 360B-01  
ISSUE O  
(MRF184)**

NOTES:  
1. DIMENSIONING AND TOLERANCING PER ANSI Y14.5M, 1982.  
2. CONTROLLING DIMENSION: INCH.

DIM	INCHES		MILLIMETERS	
	MIN	MAX	MIN	MAX
A	0.790	0.810	20.07	20.57
B	0.220	0.240	5.59	6.09
C	0.125	0.175	3.18	4.45
D	0.205	0.225	5.21	5.71
E	0.050	0.070	1.27	1.77
F	0.004	0.006	0.11	0.15
G	0.562 BSC		14.27 BSC	
H	0.070	0.090	1.78	2.29
K	0.215	0.255	5.47	6.47
N	0.350	0.370	8.89	9.39
Q	0.120	0.140	3.05	3.55

STYLE 1:  
PIN 1. DRAIN  
2. GATE  
3. SOURCE

**CASE 360C-03  
ISSUE B  
(MRF184S)**

NOTES:  
1. DIMENSIONING AND TOLERANCING PER ANSI Y14.5M, 1982.  
2. CONTROLLING DIMENSION: INCH.

DIM	INCHES		MILLIMETERS	
	MIN	MAX	MIN	MAX
A	0.370	0.390	9.40	9.91
B	0.220	0.240	5.59	6.09
C	0.105	0.155	2.67	3.94
D	0.205	0.225	5.21	5.71
E	0.035	0.045	0.89	1.14
F	0.004	0.006	0.11	0.15
H	0.057	0.067	1.45	1.70
K	0.085	0.115	2.16	2.92
N	0.350	0.370	8.89	9.39

STYLE 1:  
PIN 1. DRAIN  
2. GATE  
3. SOURCE

Motorola reserves the right to make changes without further notice to any products herein. Motorola makes no warranty, representation or guarantee regarding the suitability of its products for any particular purpose, nor does Motorola assume any liability arising out of the application or use of any product or circuit, and specifically disclaims any and all liability, including without limitation consequential or incidental damages. "Typical" parameters which may be provided in Motorola data sheets and/or specifications can and do vary in different applications and actual performance may vary over time. All operating parameters, including "Typicals" must be validated for each customer application by customer's technical experts. Motorola does not convey any license under its patent rights nor the rights of others. Motorola products are not designed, intended, or authorized for use as components in systems intended for surgical implant into the body, or other applications intended to support or sustain life, or for any other application in which the failure of the Motorola product could create a situation where personal injury or death may occur. Should Buyer purchase or use Motorola products for any such unintended or unauthorized application, Buyer shall indemnify and hold Motorola and its officers, employees, subsidiaries, affiliates, and distributors harmless against all claims, costs, damages, and expenses, and reasonable attorney fees arising out of, directly or indirectly, any claim of personal injury or death associated with such unintended or unauthorized use, even if such claim alleges that Motorola was negligent regarding the design or manufacture of the part. Motorola and are registered trademarks of Motorola, Inc. Motorola, Inc. is an Equal Opportunity/Affirmative Action Employer.

Mfax is a trademark of Motorola, Inc.

**How to reach us:**

**USA/EUROPE/Locations Not Listed:** Motorola Literature Distribution;  
P.O. Box 5405, Denver, Colorado 80217. 303-675-2140 or 1-800-441-2447

**JAPAN:** Nippon Motorola Ltd.: SPD, Strategic Planning Office, 4-32-1,  
Nishi-Gotanda, Shinagawa-ku, Tokyo 141, Japan. 81-3-5487-8488

**Mfax™:** RMFAX0@email.sps.mot.com – TOUCHTONE 602-244-6609  
– US & Canada ONLY 1-800-774-1848

**ASIA/PACIFIC:** Motorola Semiconductors H.K. Ltd.; 8B Tai Ping Industrial Park,  
51 Ting Kok Road, Tai Po, N.T., Hong Kong. 852-26629298

**INTERNET:** <http://motorola.com/sps>

