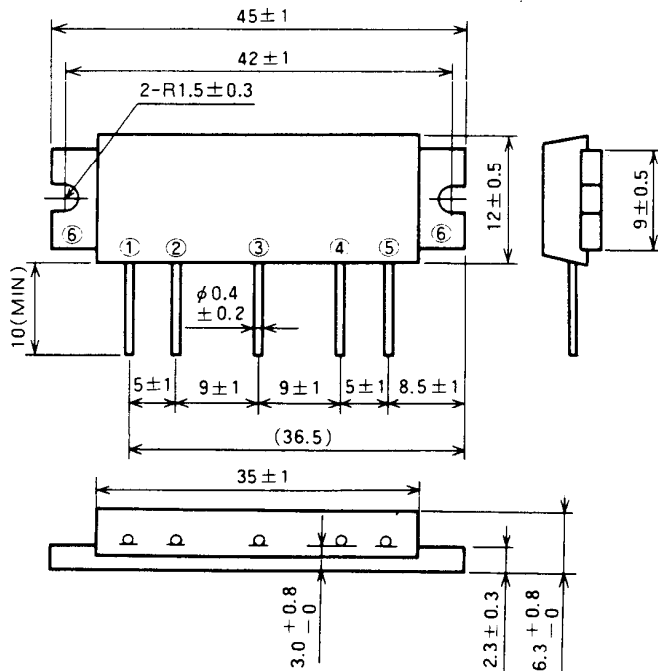


M67785H

220-240MHz, 9.6V, 5W, FM PORTABLE RADIO

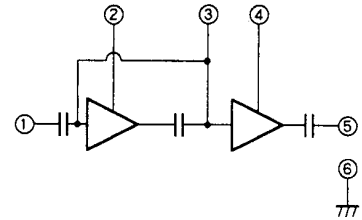
OUTLINE DRAWING

Dimensions in mm



H13

BLOCK DIAGRAM



PIN :

- ① Pin : RF INPUT
- ② VCC1 : 1st. DC SUPPLY
- ③ VBB : BASE BIAS SUPPLY
- ④ VCC2 : 2nd. DC SUPPLY
- ⑤ Po : RF OUTPUT
- ⑥ GND : FIN

ABSOLUTE MAXIMUM RATINGS (Tc = 25°C unless otherwise noted)

Symbol	Parameter	Conditions	Ratings	Unit
Vcc	Supply voltage		13	V
VBB	Base bias		5.5	V
Icc	Total current		4	A
P _{in(max)}	Input power	Z _G = Z _L = 50 Ω, V _{cc1} ≤ 9.6V	30	mW
P _{o(max)}	Output power	Z _G = Z _L = 50 Ω	7	W
T _{c(OP)}	Operation case temperature		- 30 to 110	°C
T _{stg}	Storage temperature		- 40 to 110	°C

Note. Above parameters are guaranteed independently.

ELECTRICAL CHARACTERISTICS (Tc = 25°C unless otherwise noted)

Symbol	Parameter	Test conditions	Limits		Unit
			Min	Max	
f	Frequency range	P _{in} = 20mW V _{BB} = 5V V _{cc} = 9.6V Z _G = Z _L = 50 Ω	220	240	MHz
P _o	Output power		5		W
η _T	Total efficiency		40		%
2f _o	2nd. harmonic			- 20	dBc
3f _o	3rd. harmonic			- 35	dBc
ρ _{in}	Input VSWR			2.5	-
-	Load VSWR tolerance	V _{cc2} = 13V, V _{BB} = 5V, P _{in} = 20mW P _o = 5W (V _{cc1} : controlled) Load VSWR=20:1 (All phase), 2sec. Z _G = 50 Ω	No degradation or destroy		-

Note. Above parameters, ratings, limits and conditions are subject to change.